

Panache Quilt

This elegant quilt showcases the gorgeous texture and print of the Panache cotton slubs. Teamed with other wovens and slubs from the Panache range this quilt makes a classic and timeless statement.

The backing is the ready made 4" patched wovens, making the quilt totally reversible.

1/4" seams used throughout

WOF = width of fabric or selvedge to selvedge

Finished size: 73" x 83"

Cutting

Black Version

- Centre (12219 13) cut:
 - 40 1/2" x 50 1/2" (x1)
- First border (12218 22)cut:
 - 3 1/2" strips x WOF (x6)
- Second border (12221 12) cut:
 - 2 1/2" strips x WOF (x6)
- Third border (12220 11) cut:
 - 5 1/2" strips x WOF (x7)
- Final border (12218 23)) cut:
 - 6 1/2" strips x WOF (x8)
- Binding (12218 29) cut:
 - 2 1/2" strips x WOF (x8)
- Backing (12221 37) cut :
 - 90" x WOF (x2)



Red Version

- Centre (12219 12) cut:
 - 40 1/2" x 50 1/2" (x1)
- First border (12218 12)cut:
 - 3 1/2" strips x WOF (x6)
- Second border (12221 11) cut:
 - 2 1/2" strips x WOF (x6)
- Third border (12220 12) cut:
 - 5 1/2" strips x WOF (x7)
- Final border (12218 13) cut:
 - 6 1/2" strips x WOF (x8)
- Binding (12218 16)cut:
 - 2 1/2" strips x WOF (x8)
- Backing (12221 36) cut :
 - 90" x WOF (x2)

Assembling the Quilt

1. Join all the first border strips end to end.
2. Follow the instructions below for adding borders to quilts.
3. Repeat the process for each border, until all 4 borders are sewn onto the quilt.
4. Mitre the corners of the striped borders if desired. See my video on YouTube for hints and tips.
5. Layer, quilt and bind as desired.



YouTube
Pieces to Treasure



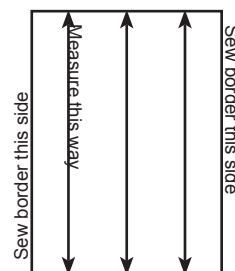
Website
Pieces to Treasure



Adding Borders Successfully

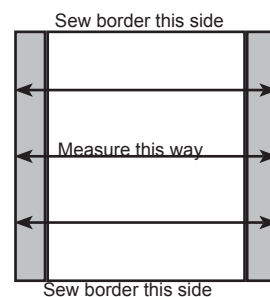
It is important to attach all borders to a quilt correctly so it stays flat and square.

1. Measure through your quilt top in 3 places, in one direction, edge to edge.
2. Take an average of these three measurements by adding them up and dividing by 3.
3. Cut 2 borders this length.
4. Mark the middle of the long side of both borders and the centre of the sides of the quilt, in the direction you just measured.



5. Pin the centre of the border and the middle of the quilt sides together and match the ends of the borders to the corners of the quilt.

6. Pin the remaining border so it fits.
7. Sew the border to the quilt along the two opposite sides.
8. Press seams towards the border.
9. Lay the quilt flat and measure in the other direction, in 3 places.



10. Repeat the process for the remaining two sides of the quilt.
11. Repeat this process for every additional border added.

